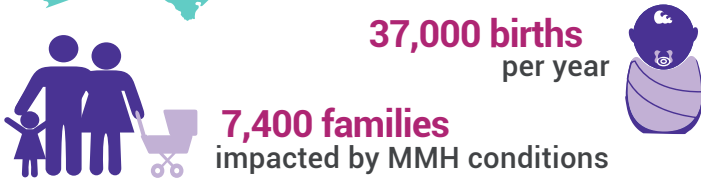


## MATERNAL MENTAL HEALTH AT A GLANCE



**37,000 births**  
per year

**7,400 families**  
impacted by MMH conditions

**\$178 million cost**  
of untreated MMH conditions  
mother's lost wages and productivity,  
poor health outcomes of mother and baby

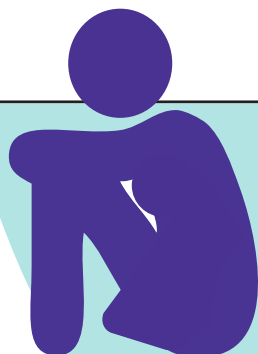


**24%** postpartum depression rate<sup>1</sup>  
**63%** births covered by Medicaid<sup>2</sup>  
**27** deaths per 100,000 births<sup>3</sup>  
maternal mortality rate

<sup>1</sup> CDC    <sup>2</sup> March of Dimes    <sup>3</sup> PRAMS  
\*Cost is calculated as follows:  
(7,400) X (0.75 remain untreated) x (\$32,000 cost) = \$178 million

### STATEWIDE EFFORTS

x	Coalition/Commission/Task Force	
x	Medicaid Expansion	
✓	Maternal Mortality Review	<b>Maternal Mortality Review Committee</b> <b>MMRC Report 2019</b>
✓	Perinatal Quality Collaborative	<b>Mississippi Perinatal Quality Collaborative</b>
x	Psychiatry Access Program	
✓	Postpartum Support International Chapter	<b>PSI Mississippi Resource Page</b>
x	Proclamation or Resolution	
x	State Legislation or Policy	
	x Requires screening	
	x Requires education	
✓	Zulresso Treatment	<b>Precise Research Center (Flowood)</b>
✓	Safer Childbirth Cities	<b>Mississippi Public Health Institute, The Jackson Safer Childbirth Experience</b> (Jackson) is participating in the Safer Childbirth Cities program; the goal of this initiative is to help end preventable maternal deaths by reducing disparities, promoting health equity, providing doula and perinatal support, and bolstering the care system around women during pregnancy, childbirth, and postpartum.

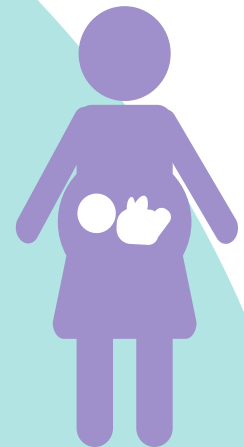


## COMMUNITY RESOURCES

**MomME** (Statewide) – Community-based organization that provides maternal mental health services to new and expecting mothers and families by offering support groups, maternal classes, peer mentoring, sponsored therapeutic services, and social engagement community outreach events.

**Right Track Medical** (Statewide) – Offers postpartum therapy, groups and self assessment guides.

**Pickles and Popsicles** (Jackson) – Community-based organization supporting mothers through the mental, emotional and physical challenges of motherhood by providing mentorship, connections, and support for new mothers.



## RESEARCH AND TREATMENT

### **The University of Mississippi Medical Center (Jackson) – Center of Excellence in Perinatal Research**

Studies focus on the integrative relationships and health disparities among adverse pregnancy, pregnancy outcomes and developmental programming of cardiovascular, renal, metabolic, and behavioral diseases.

### **Pine Grove Treatment – Women's Clinic** (Hattiesburg)

Program designed to meet the unique mental health care for women during pregnancy, and following the birth of their child.

