

MATERNAL MENTAL HEALTH AT A GLANCE



23,000 births
per year

4,600 families
impacted by MMH conditions



\$110 million cost
of untreated MMH conditions
mother's lost wages and productivity,
poor health outcomes of mother and baby




13% postpartum depression rate¹

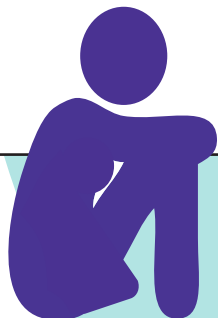
56% births covered by Medicaid²

32 deaths per 100,000 births³
maternal mortality rate

1 CDC 2 March of Dimes 3 CDC Wonder Online Database

STATEWIDE EFFORTS

x	Coalition/Task Force	
✓	Medicaid Expansion	
✓	Maternal Mortality Review	New Mexico Maternal Mortality Review Committee Fact Sheet and Presentation
✓	Perinatal Quality Collaborative	New Mexico Perinatal Collaborative
x	Psychiatry Access Program	
✓	Postpartum Support International Chapter	PSI New Mexico Chapter
x	Proclamation or Resolution	
x	State Legislation or Policy	
	<ul style="list-style-type: none"> x Requires screening x Requires education 	
✓	Other	<p>New Mexico PRAMS Report on Postpartum Depression</p> <p>New Mexico Network of Care, Department of Human Services Postpartum Depression Webpage</p> <p>New Mexico Crisis and Access Line: 1-855-662-7474</p> <p>New Mexico Peer-to-Peer Warmline: 1-855-466-7100</p>



COMMUNITY RESOURCES

Improving Perinatal Health (Statewide)

Supports the implementation of AIM safety bundles in hospitals and birthing centers.

Lovelace Hospital System's Labor of Love Program (Albuquerque and Roswell)

Provides support during pregnancy and following pregnancy, including access to free healthcare "perks" and assistance finding a doctor or insurance.

UNM Health Milagro Program (Statewide)

Provides comprehensive prenatal care for pregnant women with substance use disorders at UNM Family Medicine clinics.

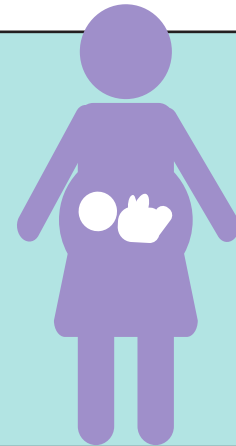
Kassy's Kause (Statewide)

Provides information about and resources for those suffering perinatal mood and anxiety disorders, including a free online support group.

TREATMENT

G.R.A.C.E., Giving Respect and Compassion to Expecting Moms (Albuquerque)

Lovelace Hospital System provides supportive care to help women living with addictions during and after pregnancy.



RESEARCH

"A Journey to Empowerment and Health: Building the New Mexico Perinatal Mental Health Improvement Network"

Goal of this project is to build community, healthcare, and research capacities to address the critical gap in perinatal care.

"Examining the Prevalence of Peripartum Depression in a Border Community"

Article published in Women's Health Reports, June 2021.