

## MATERNAL MENTAL HEALTH AT A GLANCE



**64,000 births**  
per year

**13,000 families**  
impacted by MMH conditions



**\$312 million cost**  
of untreated MMH conditions  
mother's lost wages and productivity,  
poor health outcomes of mother and baby



**12%** postpartum depression rate<sup>1</sup>  
**37%** births covered by Medicaid<sup>2</sup>  
**20** deaths per 100,000 births<sup>3</sup>  
maternal mortality rate

<sup>1</sup> PRAMS    <sup>2</sup> March of Dimes    <sup>3</sup> CDC

\*Cost is calculated as follows:

$(13,000) \times (0.75 \text{ remain untreated}) \times (\$32,000 \text{ cost}) = \$312 \text{ million}$

### STATEWIDE EFFORTS

✓	Coalition/Commission/Task Force	<p><b>Wisconsin Association for Perinatal Care</b> (Madison)</p> <p><b>Wisconsin Alliance for Women's Health</b> (Madison)</p>
x	Medicaid Expansion	
✓	Maternal Mortality Review	<b>Wisconsin Maternal Mortality Review Team (MMRT)</b>
✓	Perinatal Quality Collaborative	<b>Wisconsin Perinatal Quality Collaborative (WisPQC)</b>
✓	Psychiatry Access Program	<b>The Periscope Project</b>
✓	Postpartum Support International Chapter	<b>PSI Wisconsin Chapter</b>
x	Proclamation or Resolution	
x	State Legislation or Policy x Requires screening x Requires education	
✓	State Services and Resources	<p><b>Wisconsin's Prenatal Care Coordination Program</b> (Statewide) Provides a series of perinatal mental health webinars and online training modules for providers caring for the perinatal people. Wisconsin PRAMS provides a <b>Fact Sheet</b> on perinatal depression.</p>



## COMMUNITY RESOURCES

**Dane County Perinatal Network** (Dane County) - A network of experienced providers providing resources in Dane County for individuals in need of maternal mental health services.

**Madison Postpartum Collective** (Madison) – Provides resources for individuals experiencing maternal mental health challenges.

**Milwaukee Mom** (Milwaukee) – Provides lists of resources for new parents.

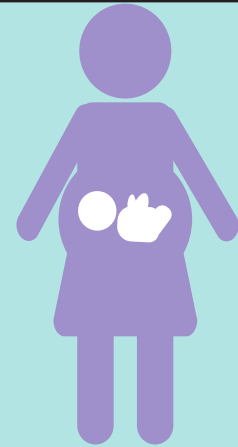
**Moms Mental Health Initiative** (Southeastern Wisconsin) – Nonprofit organization dedicated to helping moms navigate perinatal mood and anxiety disorders by sharing information, connecting them to resources, and providing peer-driven support and lists of therapists by county.

**Shades of You, Shades of Me** (Statewide) – Hosts events including annual Maternal Mental Health Summit and monthly support group meetings.

## RESEARCH

University of Wisconsin Madison.

- **Women's Mental Health Program** - Research focuses on understanding the impact of maternal mental health on mother and baby.
- **Prevention Research Center** (Madison) - Research focuses on [home-visiting programs that address postpartum depression](#) and supporting the [Wisconsin Maternal Mortality Review Team](#).



## TREATMENT

**Marshfield Perinatal Mental Health Clinic** (Various locations)  
- Provides therapy and medication management, along with consultations to primary care providers.

**Froedtert and the Medical College of Wisconsin, Perinatal Mental Health Services** (Milwaukee) - Provides support groups, therapy, and medication management.